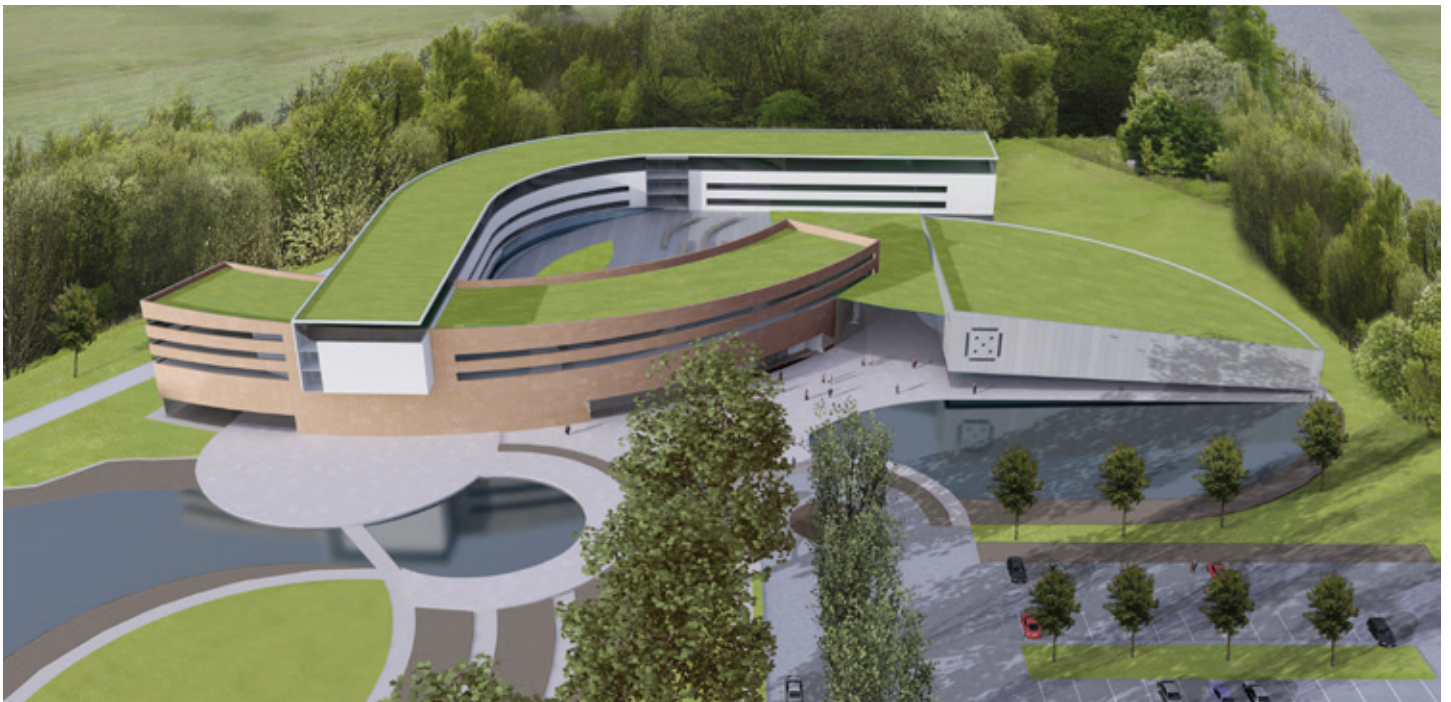




Above: View of massing model looking north



Above: View of proposed development looking east



Above: Perspective view of massing model looking east

PROJECT INFORMATION

LOCATION

Edinburgh, Scotland

PROJECT TYPE

Architecture

CLIENT

JWK Properties

Themes

Space Planning
Interior Design
Architecture

STATUS

Detailed Planning Permission,
Building Warrant.

Studio LK has been instructed by JWK Properties to prepare information, for RIBA Stages 1-7, for a 300 bedroom hotel, exhibition and conference centre between Perth and Dundee in Scotland, on a 21 acre site overlooking the River Tay. It is located on a high visibility dual carriageway, the A90 - the main road north from Edinburgh/Glasgow to Aberdeen, three miles east of Perth, 15 miles west of Dundee. The building also comprises:

- 28,000 sq. ft of quality retail space and 13,000 sq ft of office space;
- 450 "dining" seats of cabaret/theatre/cinema (more seating for cinema configuration);
- Health club and signature spa (22 treatment rooms) and Gym;
- 70,000 sq. ft exhibition and conference facility in addition to a 106,250 sq. ft of outdoor exhibition area that could be temporarily covered for special events.

Studio LK Limited

Suite WH1.12 East London Works, 75 Whitechapel Road, London, E1 1DU

+44 (0) 20 3011 2757 | www.studiolk.co.uk

STUDIO LK LIMITED IS A COMPANY LIMITED BY SHARES; COMPANY NUMBER 8386338 | VAT REGISTRATION NUMBER 159 2293 88